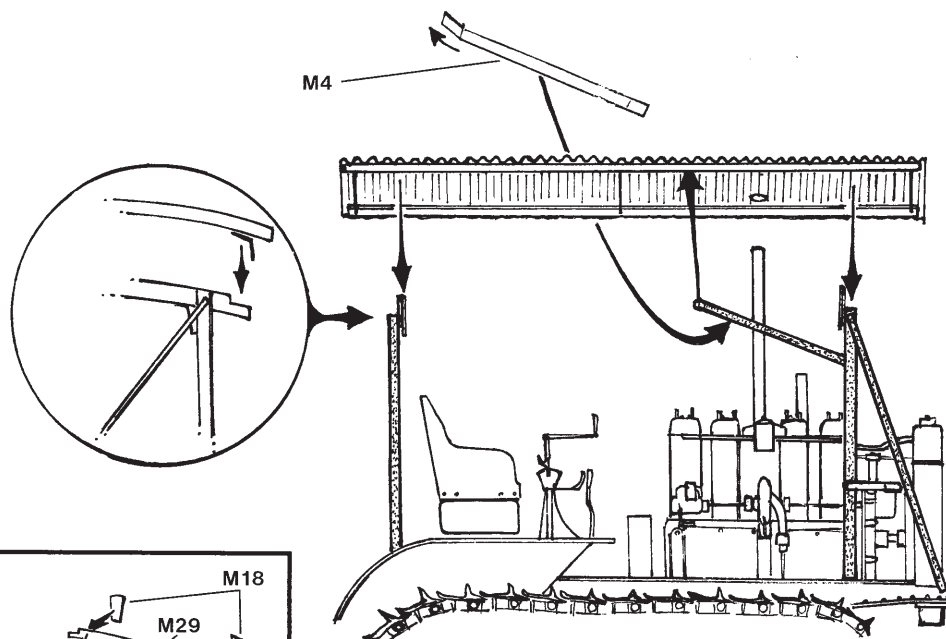
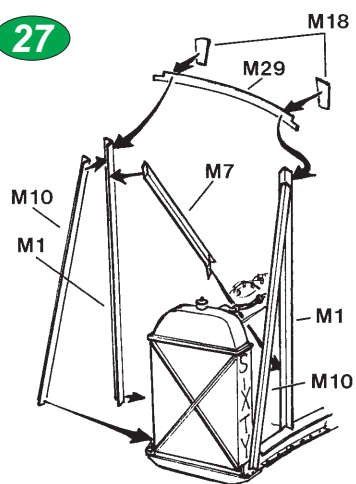


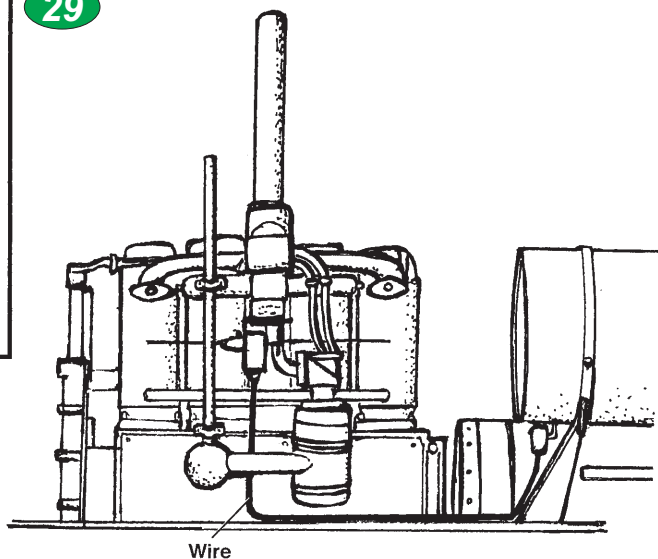
28



27



29



064

plusmodel

1/35

# Military medium tractor M-1 Caterpillar Sixty



V dubnu 1925 splynuly Holt Manufacturing Company a C.L. Best Tractor Company a daly vzniknout nové Caterpillar Tractor Company. Holt, jenž svůj první traktor vyrobil v roce 1904, přispěl do nového společenství traktory verzi 2t, 5t a 10t. Best, který první stroj vyrobil v roce 1913, přispěl svými typy Thirty („Třicítka“) a Sixty („Šedesátka“). Sixty byla uvedena v roce 1919. Se 4 válcovým vertikálním benzinovým motorem 6,5x8,5 palců (vrtání x zdvih) a dvourychlostním převodem dosahoval rychlosti 1,875 m/h nebo 2,625 m/h, maximální tah na tyči byl stanoven 11 000 liber. V roce 1921 byla opatřena 3-rychlostním převodem, upraveným karburátorem a zapalováním. Změny se projevily ve zlepšených výkonech v roce 1924 byl stanoven výkon na brzdě 72,51 ks a tah na tyči 12 360 liber. Pásové Sixty byly schopné operovat na téměř všech typech půd a proto byly modifikovány pro zemědělství, dřevařství, hornictví, pozemní stavebnictví aj. V americké armádě sloužily v průběhu druhé světové války všechny kategorie traktorů včetně traktoru Caterpillar Sixty, označovaného jako Military Medium Tractor M-1. Úspěšná konstrukce Caterpillar Sixty posloužila jako vzor pro licenční výrobu i u nás široce používaného Stalince S-60, vyráběného v Sovětském Svazu v letech 1925–1933.

**Zbarvení:** Traktory sloužící v rámci U.S. NAVY byly v barvě Ocean Gray (F.S. 36176), vozidla u U.S. ARMY byla v barvě Olive Drab. Nápis CATERPILLAR na čele chladiče byl červený



In April 1925, Holt Manufacturing Company and C.L. Best Tractor Company merged into Caterpillar Tractor Company. Both of these companies, Holt and Best brought their tractor lines of tracked tractors to the union. Holt built its first tractor in 1904, and contributed 2 Ton, 5 Ton, and 10 Ton. Best, who had built its first unit in 1913, contributed the Thirty and Sixty. The Sixty was introduced in 1919. It was fitted with 4-cylinder vertical gasoline engine, manufactured by Best. The engine featured 6.5 x 8.5 inch bore and stroke. Its 2-speed transmission allowed operating speeds of 1.875 and 2.625 mph; maximum drawbar pull was rated at 11,000 lb. In 1921, the Sixty was fitted with modified 3-speed transmission, carburetor and ignition. Changes resulted in improved performance by 1924, the Sixty developed a maximum 72.51 brake horsepower, and 12,360 lbs drawbar pull. The track-equipped Sixty was able to operate effectively in almost all soil condition and was widely adopted for agricultural, logging, mining, earthmoving, road building, and other construction applications. During WWII period, within U.S. Army served nearly all categories of tractors including Caterpillar Sixty, known under military designation Military Medium Tractor M-1. Successful construction of Caterpillar Sixty served as a pattern for license production, in our country also widely used Stalinet S-60, produced in Soviet Union in the years 1925–1933.

**Coloring:** Tractors served within U.S. NAVY were Ocean Gray (F.S. 36176) overall, vehicles at U.S. ARMY were finished in Olive Drab. Inscription on front of the radiator was Red.

Při stavbě postupujte podle instruktážních obrázků.

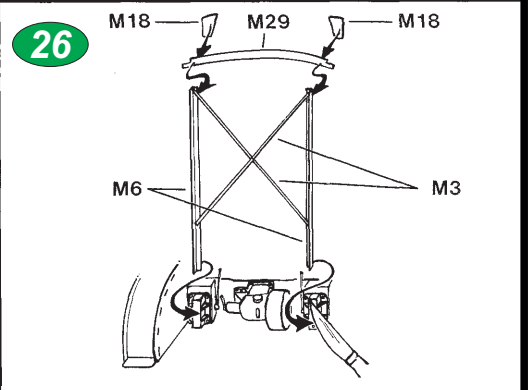
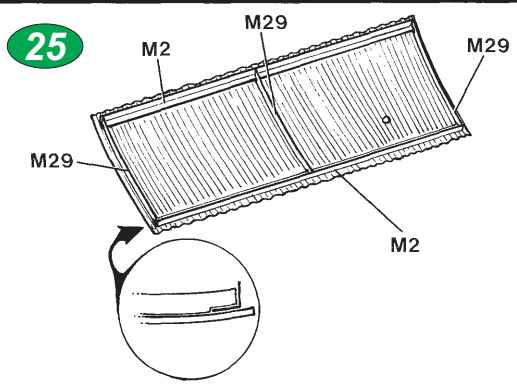
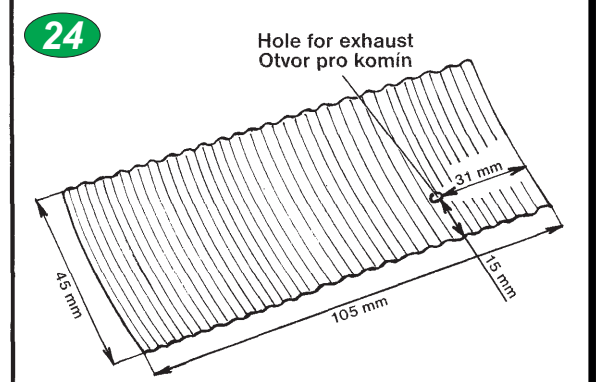
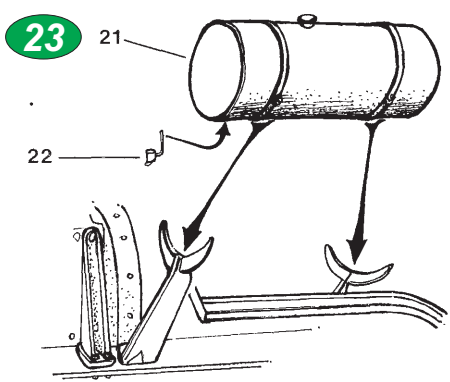
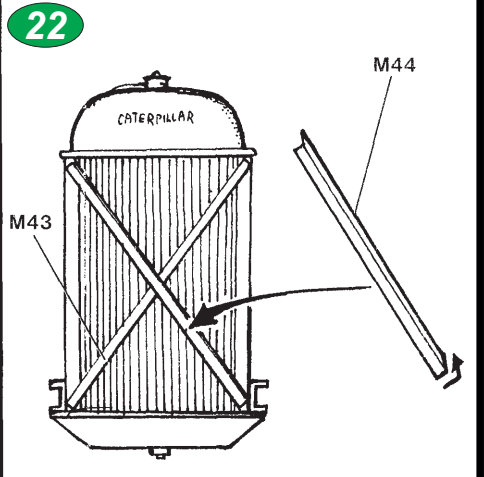
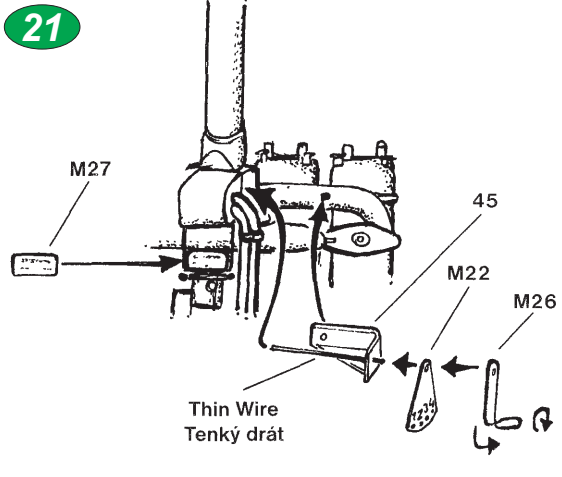
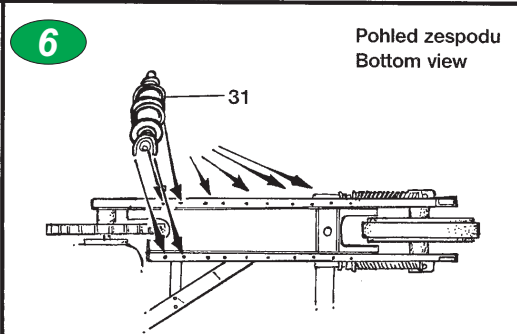
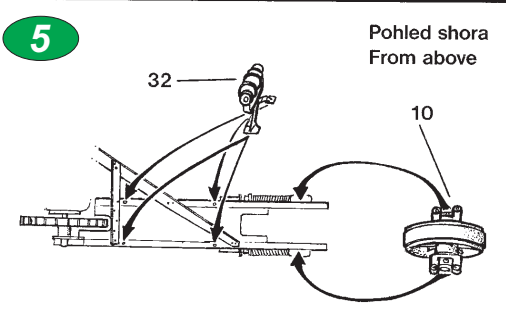
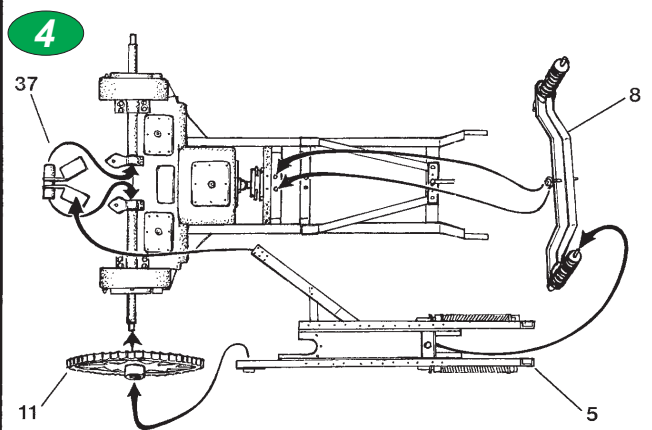
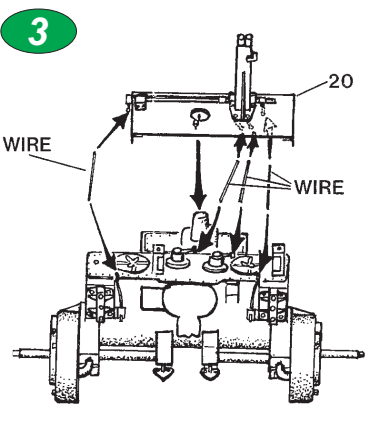
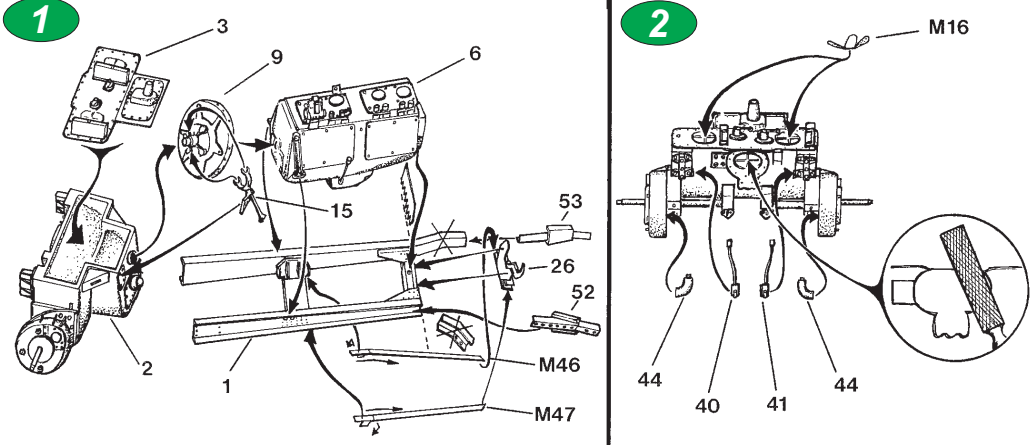
**Upozornění:** Během opracování může vznikat prach, který může dráždit dýchací cesty. Používejte ochranu očí při odstraňování kovových dílů.

Follow the instruction drawings the assembly.

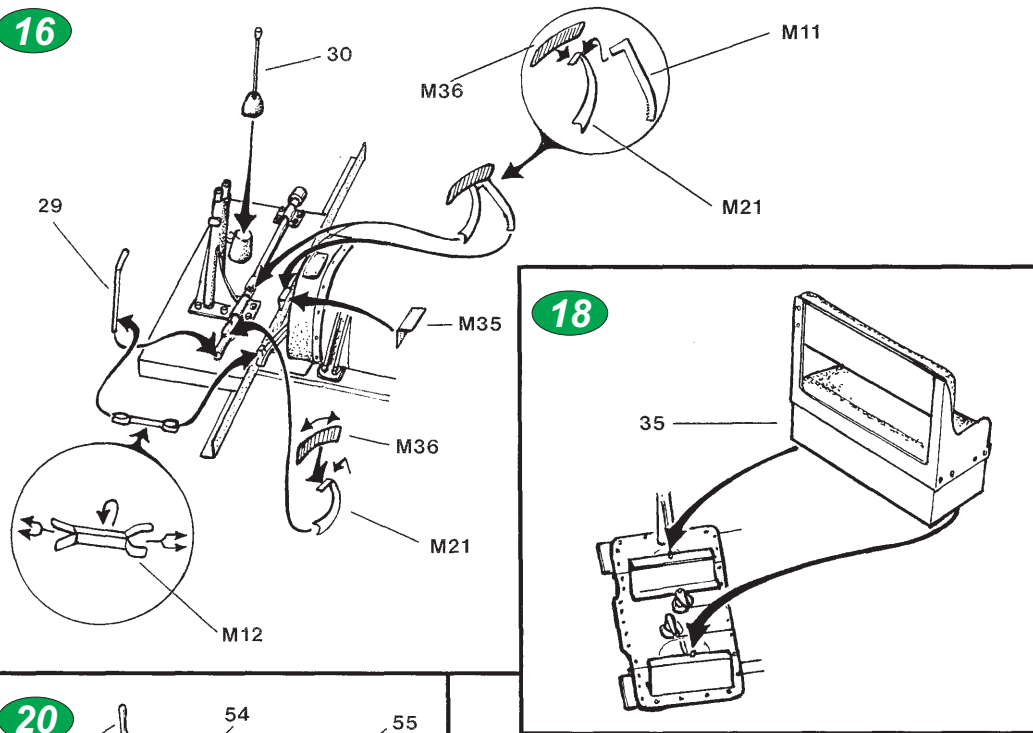
**Notice:** Machining can produce dust which can be irritating to the respiratory tract. Metal parts should be cut off using protection eyesight.

Plus Model s.r.o  
Jižní 56, 370 10 České Budějovice  
Czech Republic  
<http://www.plusmodel.cz>  
e-mail: [plusmodel@plusmodel.cz](mailto:plusmodel@plusmodel.cz)

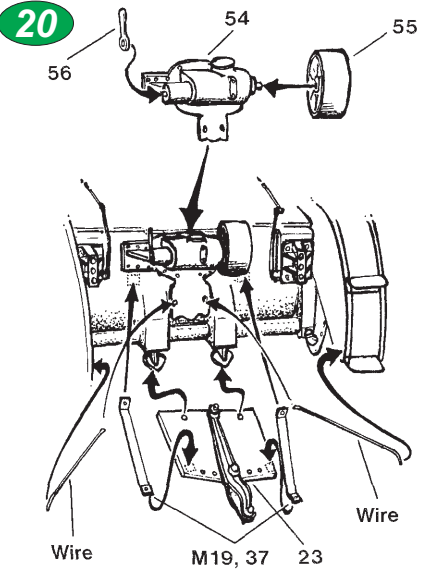
**MODELCHOICE.NET**  
ORDER & BUY DIRECTLY FROM MANUFACTURERS



16

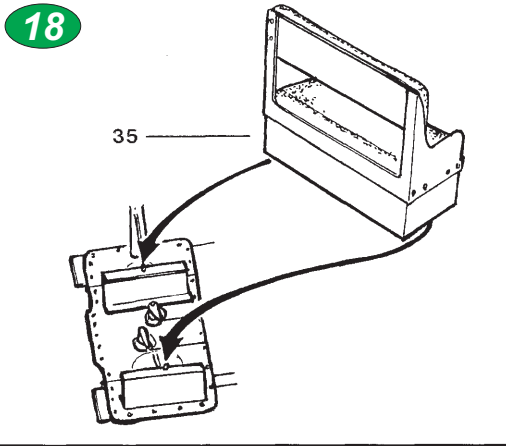


20

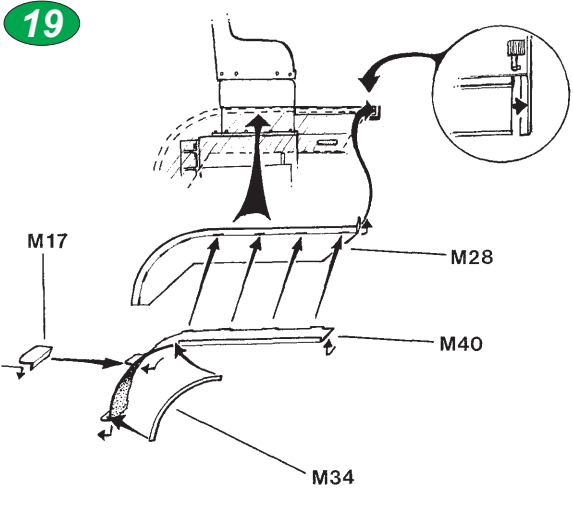


6

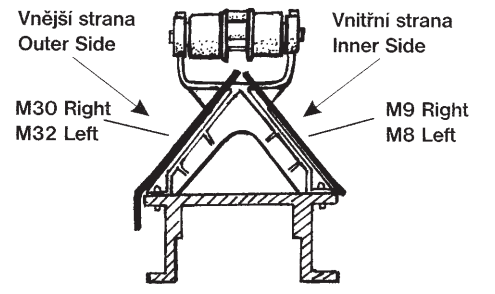
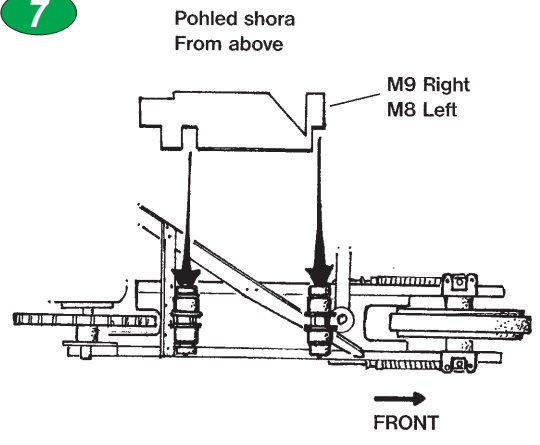
18



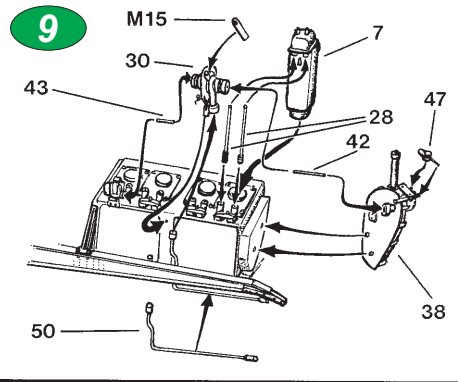
19



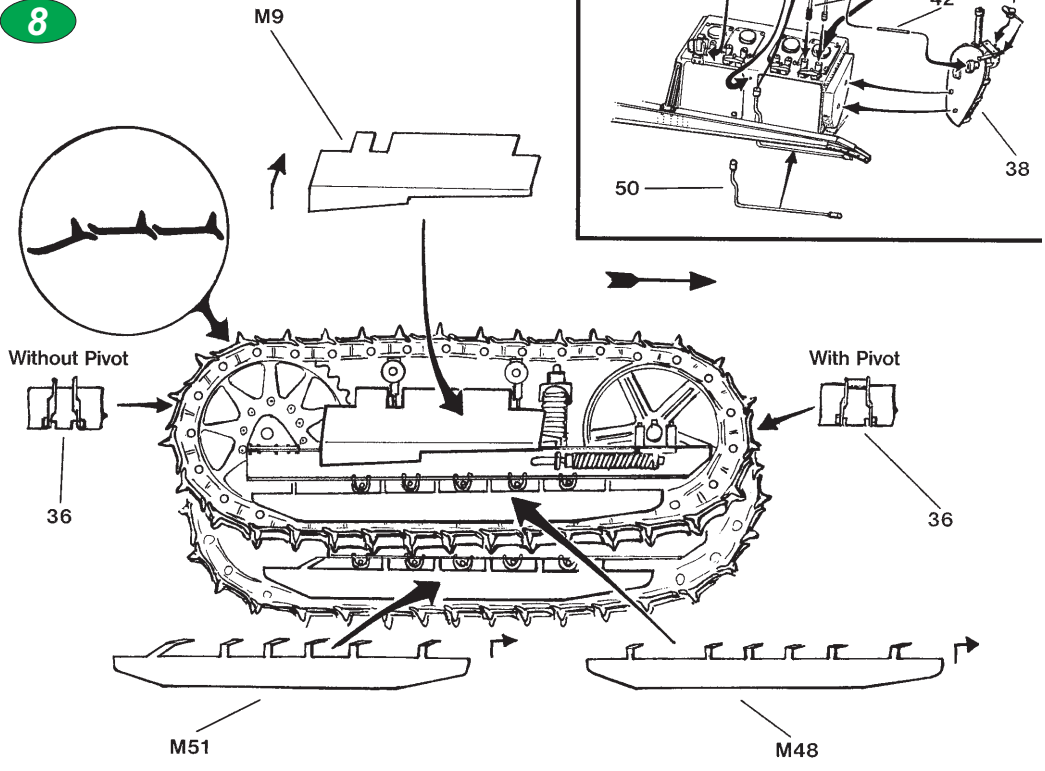
7



9

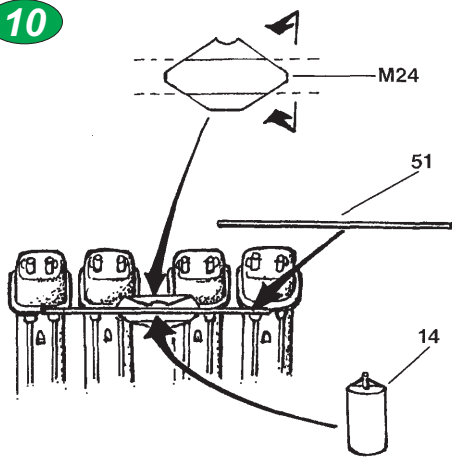


8

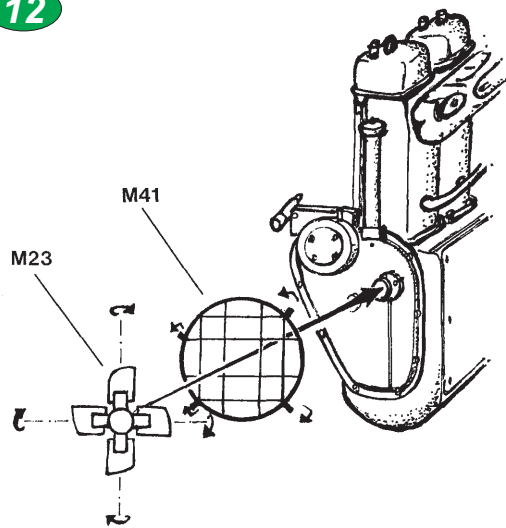


3

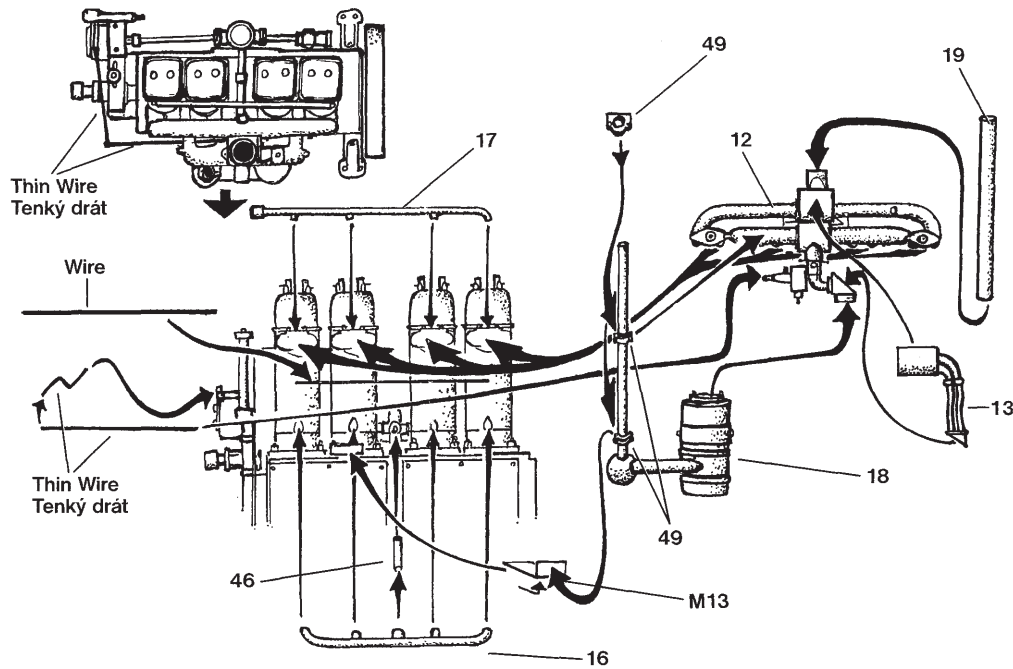
10



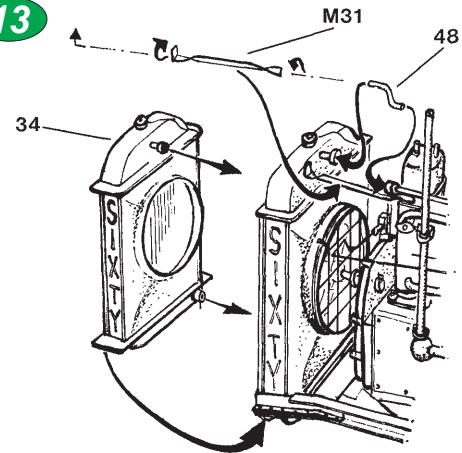
12



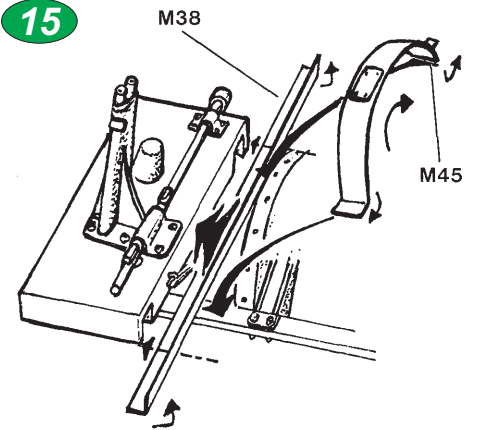
11



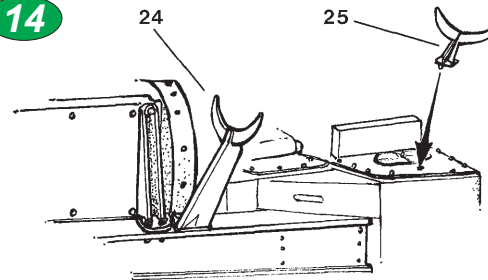
13



15



14



17

